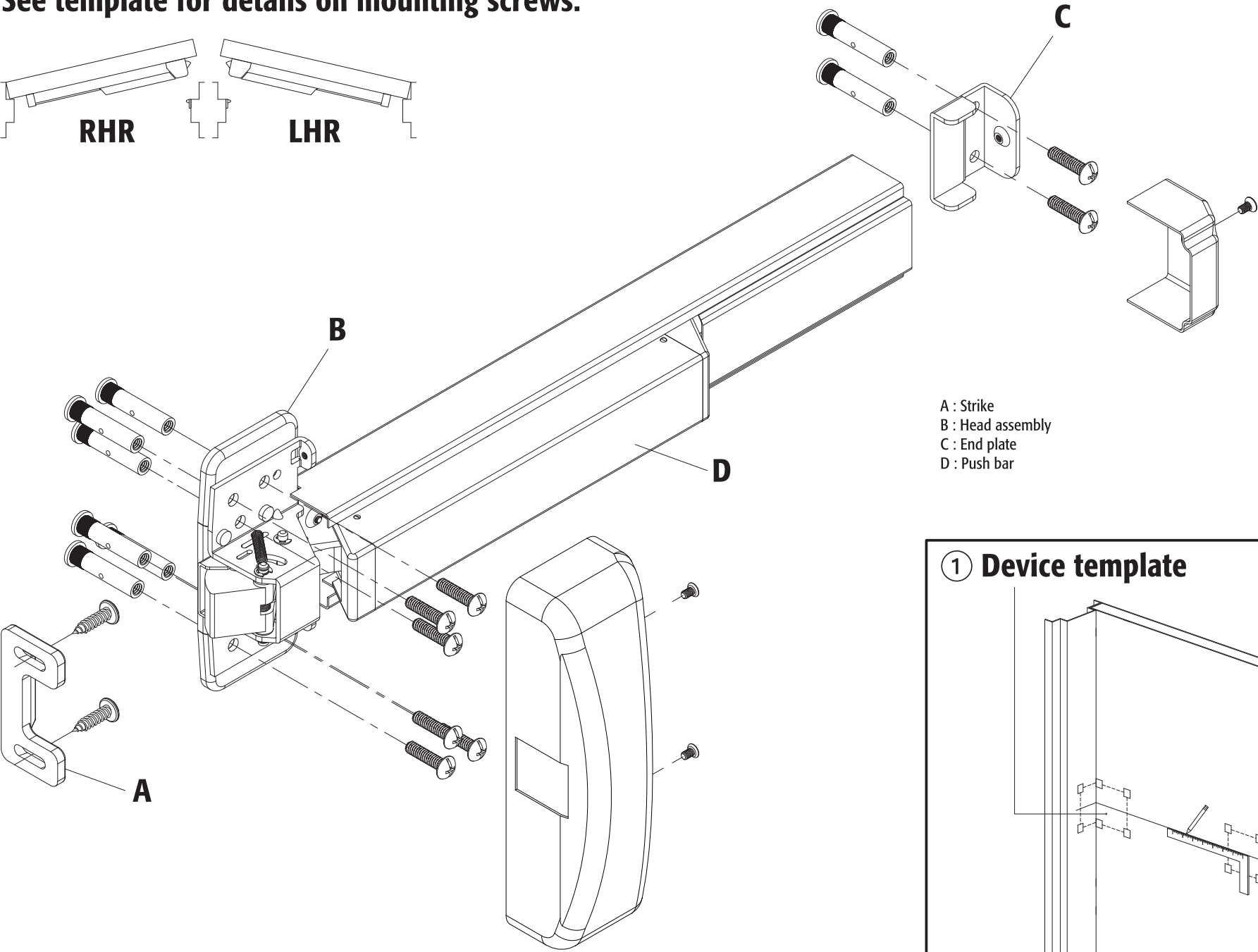
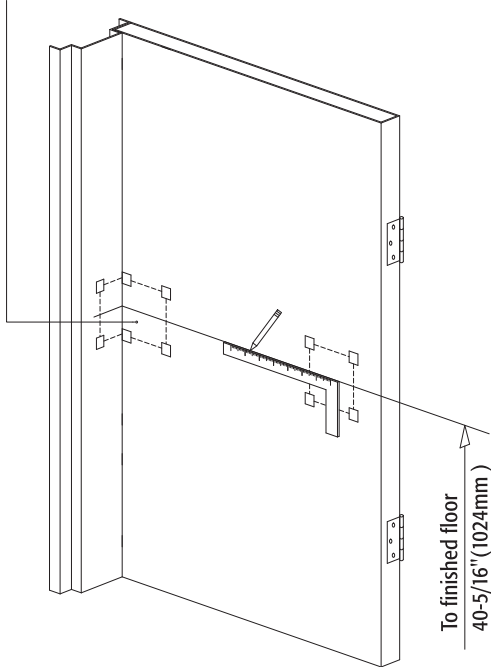


MNC5701 RIM EXIT DEVICE-RERVERSIBLE
INSTALLATION INSTRUCTIONS
LHR door shown , RHR door opposite

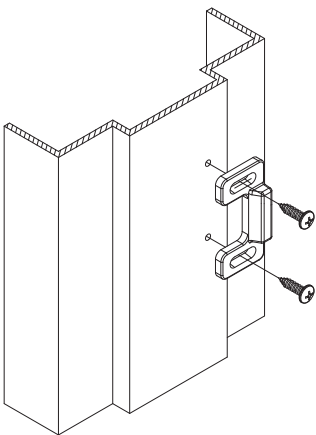
For steel prepared doors , drill / tap and use supplied machine screws.
For thin gauge metal , non-prepared doors or for labeled wood doors use thru bolts.
See template for details on mounting screws.



1 Device template

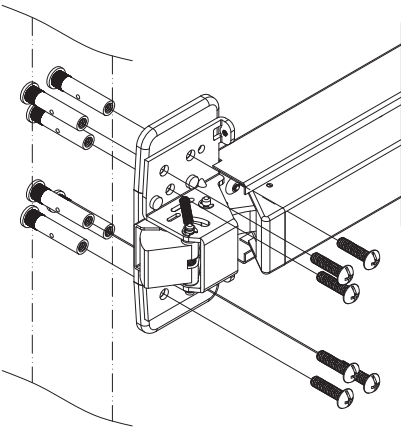


2 Strike Install

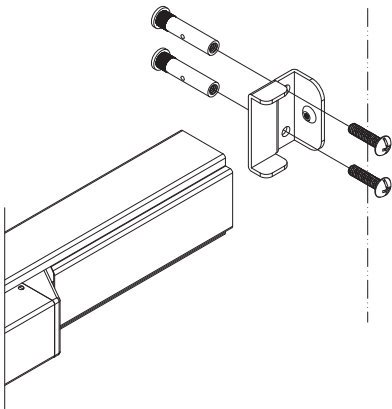


Install the strike to the frame
with 2 screws as shown

3 Head assembly and end plate Install



Step 1:
Install the head assembly to the door with 6 screws as shown



Step 2:
Install the end plate to the door with 2 screws as shown